

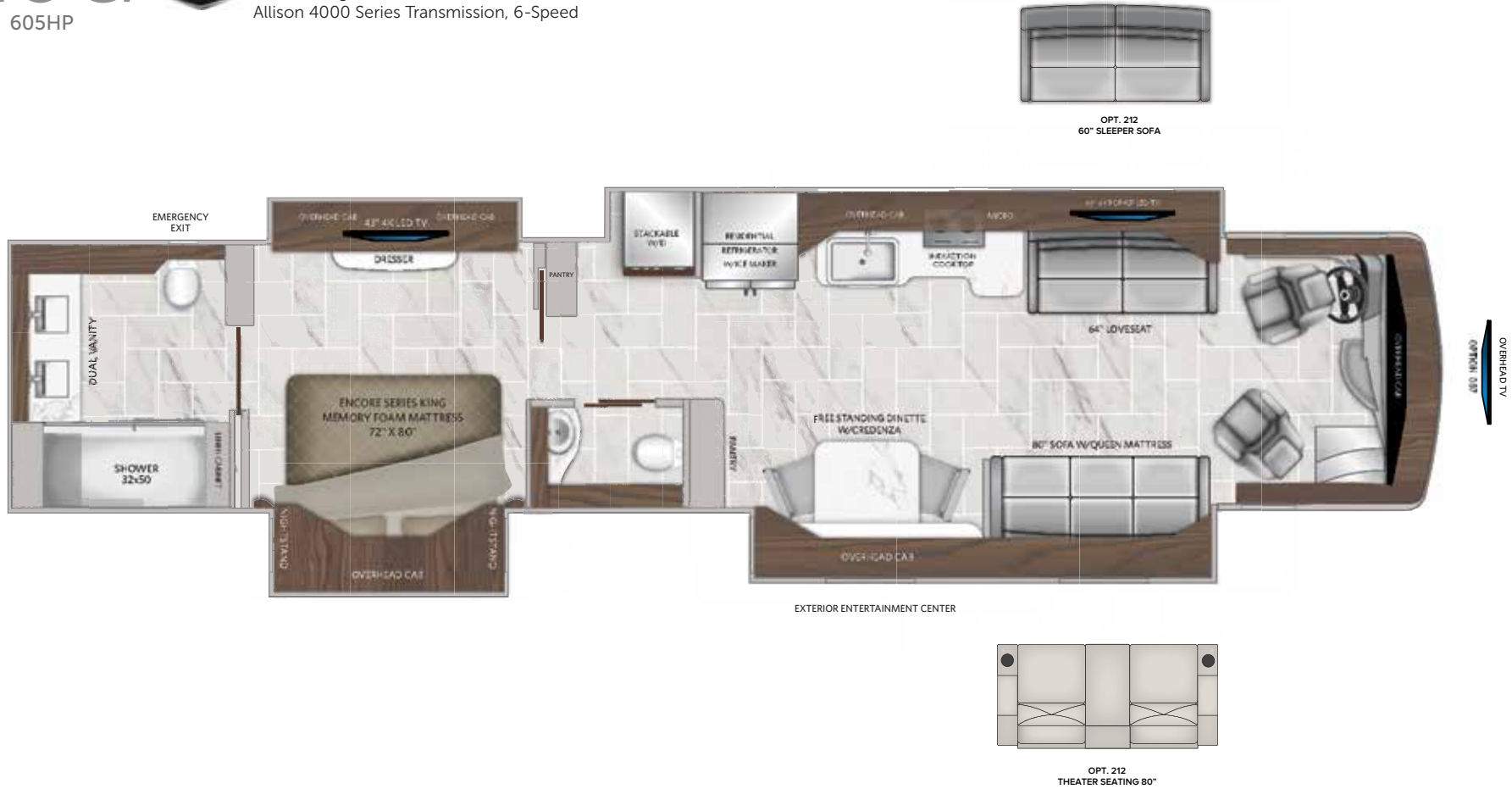


45G
605HP



LIBERTY BRIDGE® CHASSIS
Cummins® X15, 605HP Engine with 3 Stage Engine Brake
1950 lb/ft Torque
Hitch Rating: 20,000#
Allison 4000 Series Transmission, 6-Speed

AMERICAN EAGLE
CLASS A DIESEL | MODEL YEAR 2022



45G OPTIONS

| | | | | | |
|-----|--------------------------------------|-----|-----------------------------------|-----|--|
| 051 | REAR LADDER | 103 | 360° CAMERA | 560 | VIP DELIVERY |
| 087 | FRONT OVERHEAD LED 43" TV | 111 | EXTERIOR FREEZER | 563 | TECHNOLOGY PACKAGE (Cell Booster, 265W Solar Panel) |
| 101 | SATELLITE DISH TRAV'LER DISH NETWORK | 212 | THEATER SEAT 80"/SLEEPER SOFA 60" | 964 | 2ND BAY 90" ELECTRIC TRAY |
| 102 | SATELLITE DISH TRAV'LER DIRECT TV | 297 | LITHIUM BATTERY PACKAGE | | |